

WHAT IS MOBILE INTEGRATED HEALTH-COMMUNITY PARAMEDICINE (MIH-CP)?

Mobile integrated healthcare is a uniquely efficient and cost-effective model of healthcare which allows emergency medical services (EMS) professionals to engage further in the public health system.

According to the Indiana Department of Homeland Security:

“MIH is a patient-centered model of care delivered in a patient’s home or in a mobile environment. This includes teams that come to patients as well as the use of telehealth platforms. Community paramedics can visit patients at their home and assist with health screenings, vaccinations, treatments and follow-ups. MIH can also include social work, substance abuse resources, mental health, chronic disease management and more.”

WHY IS THIS IMPORTANT TO YOU?

Mobile Integrated Health is a **cradle to grave healthcare/life management service** that is designed to help community members with resource management, life guidance, medical evaluations/advice and above all, taking care of your community. MIH is a way for municipalities to **invest in your own community by addressing social determinants of health.**

Most, if not all Indiana cities and towns have some concern about healthcare. You may be serving in a

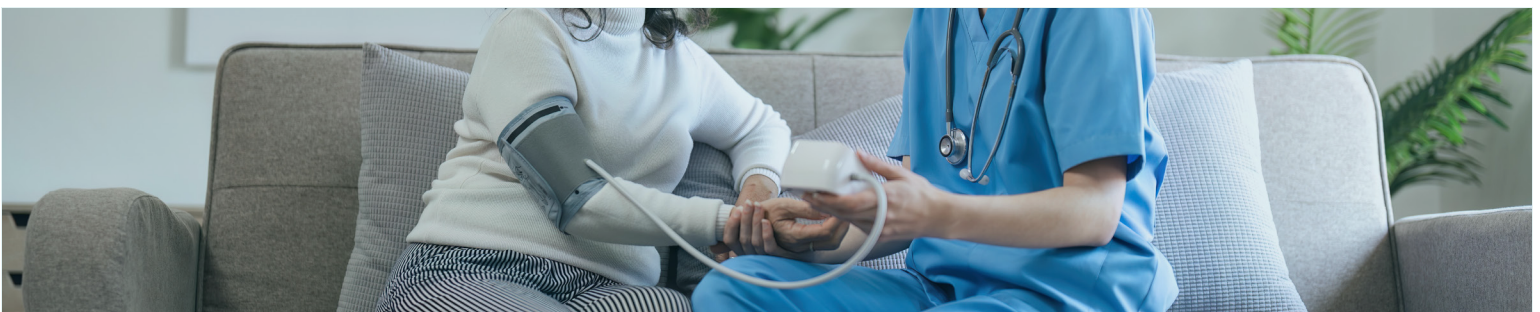
- Mental health or pre-natal/maternal care desert within a rural/urban community;
- You may have adequate providers, but your residents have limited access; or
- Your community’s needs and resources are unique.

MIH does not replace traditional healthcare providers, instead **it provides a vital conduit for care and can fill the gap between the doctor and the patient**, thus providing one of the “missing pieces” of the healthcare puzzle.

These diverse needs may be taking a financial toll on your budgets and can affect your community’s quality of life. Understanding these needs and providing solutions is also an economic development tool.

Healthier communities are stronger communities.

On the next page, an infographic shows data collected by the state from the Monticello Fire/EMS/MIH Department over a grant period from November 2022 through April 2024.



INDIANA COMMUNITY PARAMEDICINE

November 2022 - April 2024



SERVICE AREA

White County + Jefferson Township (Carroll County)

- Services
- Chronic Disease Management (since August 2022)
 - Hospital Readmission Prevention (since August 2022)
 - Maternal and Child Health, "Project Sprout" (since February 2023)

PROGRAM DATA



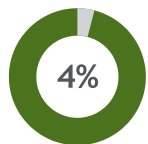
406
Individuals Served



1,214
Home Visits



33
Moms Graduated from Project Sprout



4%
Hospital Readmission Rate for InCP Patients



126
Referrals to Community Organizations



91
Educational Outreach Events

OTHER ACTIVITIES

- 100% of CPs trained in trauma-informed care
- OB Specialist is CLC-certified and Perinatal Mood Disorder Certified
- Local partnerships with DCS, WIC, and local FQHC
- Networking with neighboring healthcare settings, legislators, union leaders, and key stakeholders
- Created a mission statement for Project Sprout
- Created Project Sprout website that includes a self-referral portal
- New partnership with Purdue University School of Nursing and School of Public Health as a clinical rotation site
- Recognized by AARP of Indiana

FOR MORE INFORMATION:

INDIANA RURAL HEALTH ASSOCIATION
www.indianaruralhealth.org/services/community-paramedicine-programs

MONTICELLO FIRE DEPARTMENT
www.monticelloin.gov/departments/fire/MIH